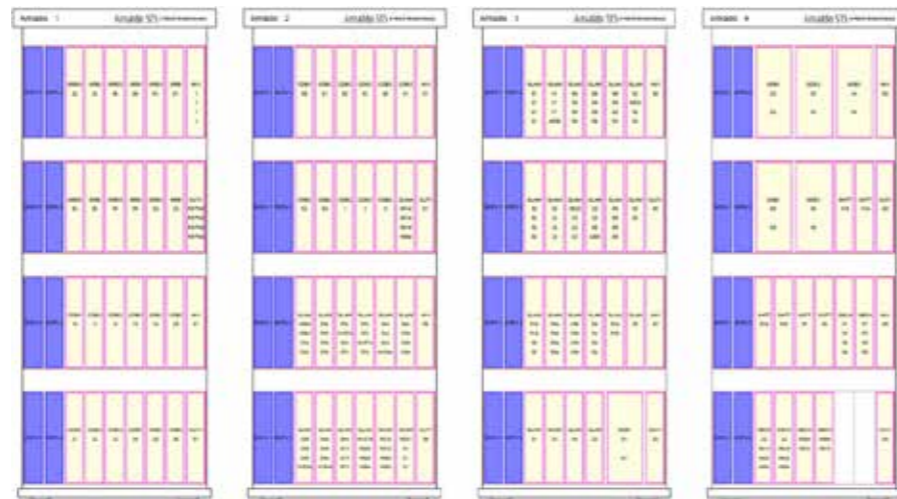


5. HW layout generation from Schematic Plan

Starting from the Schematic Plan, Control Table and defined Hw constraint rules, FAST allows :

- to automatically compute the list of needed electronic field device controllers and generate the correspondent cabinet layout.
- an extreme easy customization of the Hw layout simply by drag and drop the existing boards or adding new entities like cabinet, rack or board.



Configuration Tool

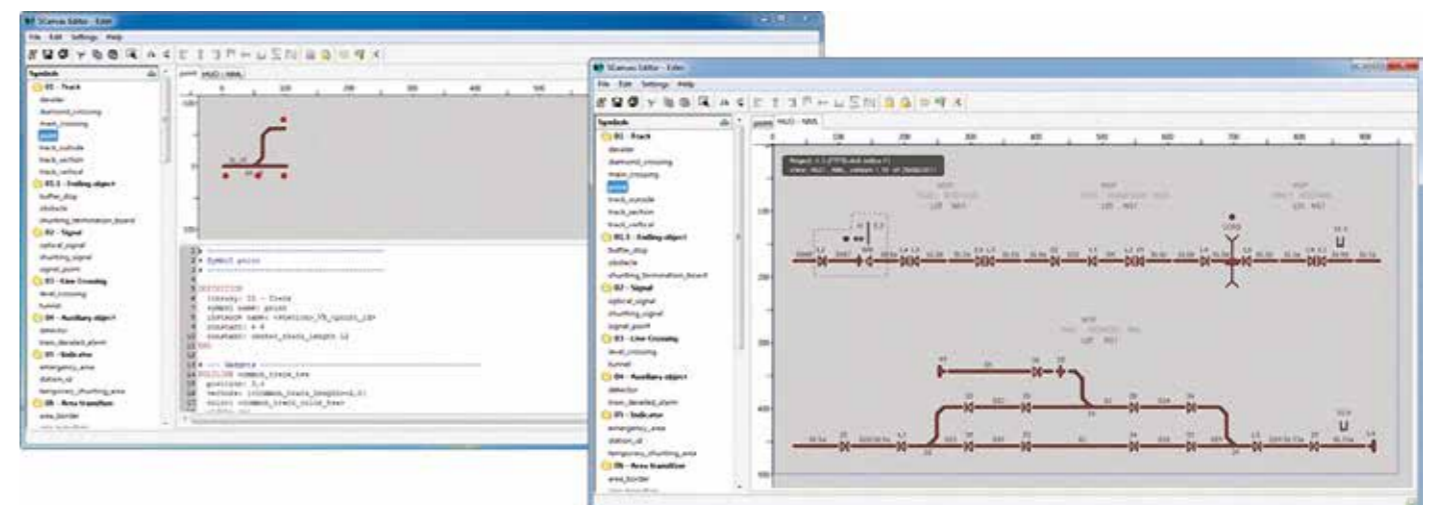
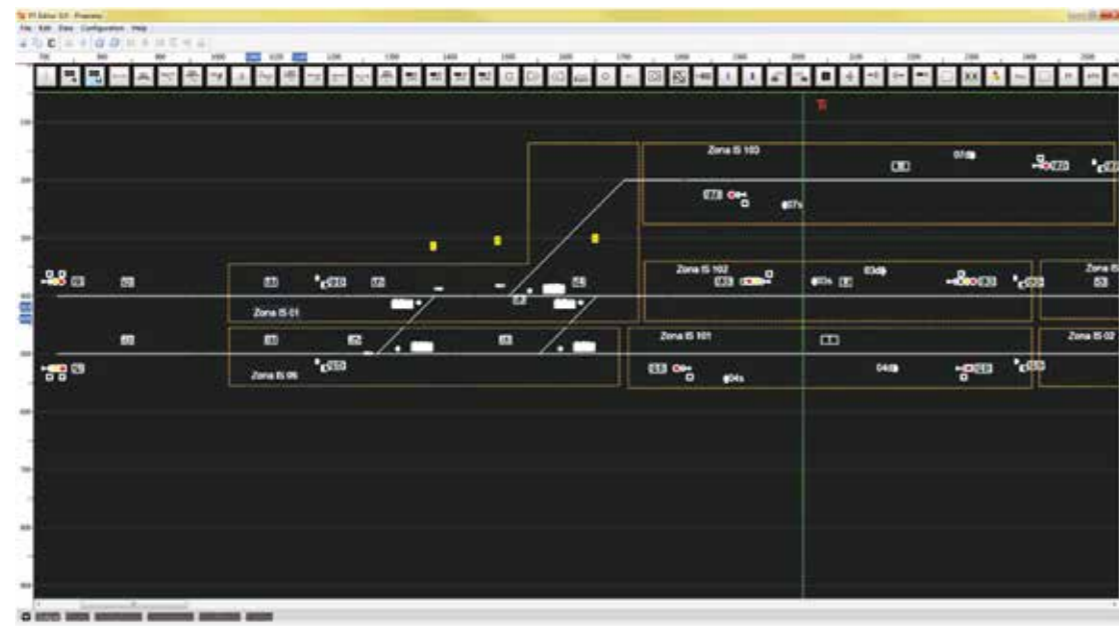
FAST is Hitachi Rail STS's suite of tools for design and configuration of the new generation of IXL systems.

It dramatically simplifies the operations and steps needed to design a new IXL scheme plan from scratch or to modify an existing one.

It is based on an extremely user-friendly interface that guides the designer from creation of the station or line layout to the generation of the final system files to be uploaded on the target IXL system or/and the generation of a complete simulated environment to be used for testing the system under design.

6. MMI automatic generation from Schematic Plan

Starting from the Schematic Plan, FAST is able to automatically generate the draw of MMI easily. The designer can easily customize the generated MMI draw by means of drag and drop and copy and paste operation.



Once all phases are completed the tool is able to automatically generate the CD install of designed interlocking with the executable binary files to be uploaded on target machine

